

MN COLLECTIONS

sleigh bell (76.13.1)



tatting shuttle (84.37.1)

candelabrum (84.38.1)

Dog Tag (88.5.1)

sleigh bell (90.39.27)

Horse Blanket Pin (90.46.5)

Brass button (91.9.9)

Brass button (91.9.10)

Tuba; Sousaphone (91.22.2)

Thimble (91.35.42b)

Thimble (91.35.42c)

Lipstick tube (91.35.49)

MN COLLECTIONS

Brass finial (91.35.94)

Brass wire rings, 2 (91.35.95)

storm window marker (93.63.9)

Child's army costume shirt (96.38.3)

brass button - engineer (96.63.30)

brass military button (96.63.34 a,b,c)

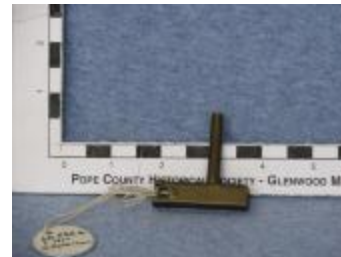
army buckle (96.63.36)

Letter Opener - WWI (1921.161)

37mm Shell (1924.570.3)



Cowbell (1966.259.1)



Object, Unidentified (1966.552.6b)



Cowbell (1966.714)

MN COLLECTIONS



Whistle (1968.861.1)



Palm (1970.1061)



Candelabrum (1972.1178.2)



Cymbal (1978.1422.3)

Spoon (2001.62.21)

Brass Switch Plate Cover (2002.4.8)

Plaque (2004.8.1)

assembly, latches, hinges, drawer pull and screws for an ice box (2004.30.43)

William Wunsch nameplate (2007.54.1)

Brass Plaque (2008.10.1)

Test Weight Scale (2008.34.1)

Test Weight Scale (2008.34.2)

MN COLLECTIONS

Test Weight Scale (2008.34.3)

solid brass military belt buckle (2009.56.1)



Stick, Composing (2014.3853.14)



Planimeter (2019.4517)



Token (2019.4521.3)



Whistle (2019.4548.1)

Brass Thimble (FIC.0994)

Powder Flask (FIC.2124)